

NAV-TV

INTERFACING THE FUTURE

3950 NW 120th Ave, Coral Springs, FL 33065 TEL 561-955-9770 FAX 561-955-9760

www.nav-tv.com info@nav-tv.com

W205-N RVC

NTV-KIT703



Quick Reference
(LVDS) Video Cable connects at Radio
Power/CAN T-Harness connects at Radio
Unit requires Accessory +12v
Do not power camera with reverse light. Use ACC or brown wire (through relay)

Overview

The W205-N RVC Kit interfaces a backup camera input (with active parking lines) and 1 front camera to the factory media screen in select 2015 Mercedes vehicles with the *new* (NTG5 or higher or NR-218) infotainment system.

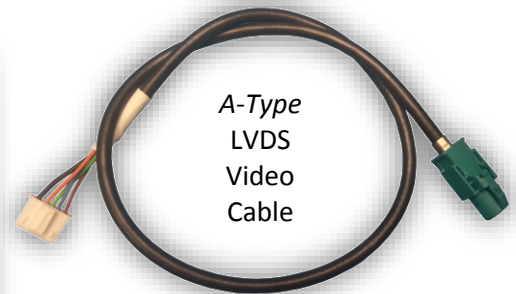
Kit Contents



OSD Menu remote



W205-N RVC Interface



A-Type
LVDS
Video
Cable



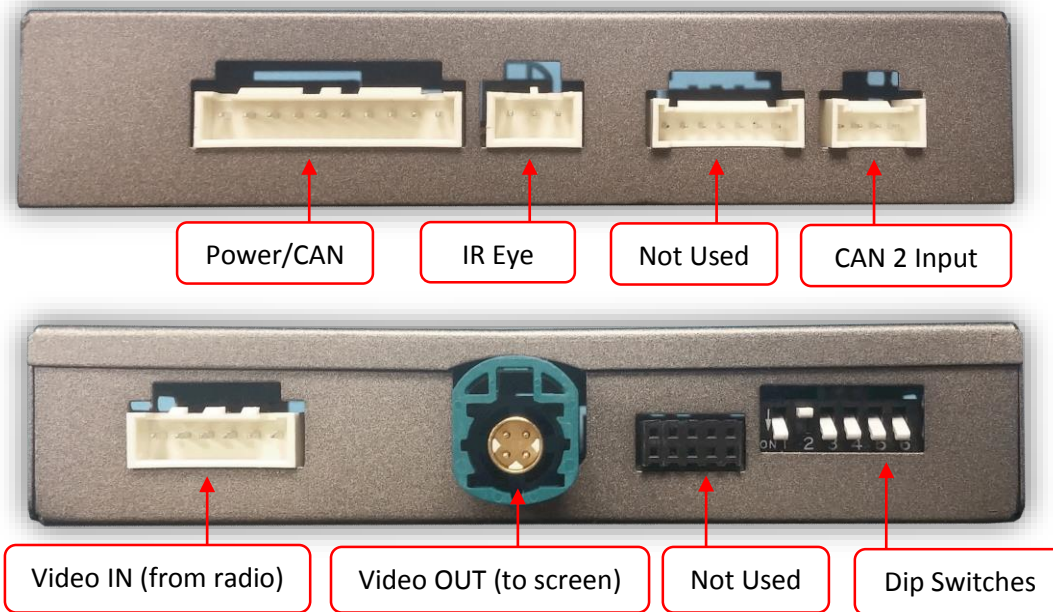
IR Eye



Plug & Play Power/CAN Harness

Agreement: End user agrees to use this product in compliance with all State and Federal laws. NAV-TV Corp. would not be held liable for misuse of its product. If you do not agree, please discontinue use immediately and return product to place of purchase. This product is intended for off-road use and passenger entertainment only.

Interface Connectors



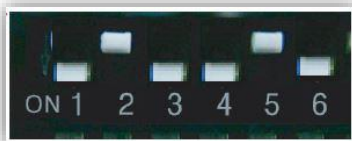
Dip Switch Settings



DIP SW	1	2	3	4	5	6
UP	KEEP DOWN	KEEP UP	OEM CAM	OEM CAM	High RES	VEH TYPE
DOWN	KEEP DOWN	KEEP UP	Adding CAM	Adding CAM	Low RES	VEH TYPE



C-Class with 7" Screen



C-Class with 8.4" Screen



2015 CLS, CLA, B & E-Class



2016+ SLC

Note: Remove power to the unit prior to making adjustments to the dip switches.



2015 SL400, 7"

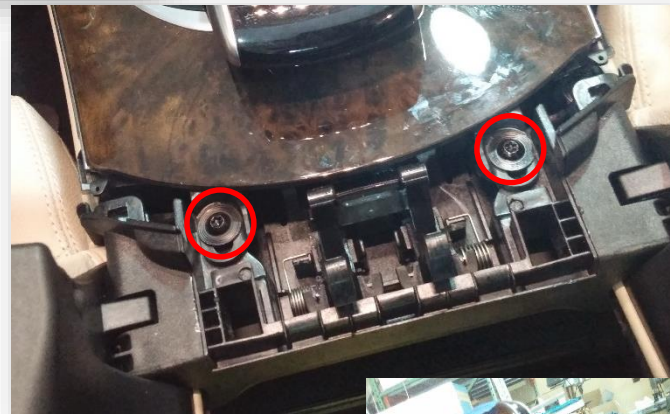
Agreement: End user agrees to use this product in compliance with all State and Federal laws. NAV-TV Corp. would not be held liable for misuse of its product. If you do not agree, please discontinue use immediately and return product to place of purchase. This product is intended for off-road use and passenger entertainment only.

Dash Removal ('15 C-Class)

1. Use a plastic tool to remove the silver trim behind the COMAND touchpad controller. You will have to open the center console and press the arm rest locks forwards for clearance:



2. Remove (2x) Torx 20 screws hidden beneath the silver trim piece in step 1:



3. Lift up the entire dash panel to just beneath the screen and disconnect all (6) plugs. Set the dash panel aside in a safe place.
4. Unscrew (2x) Torx 20 screws securing the radio to the sub dash. These screws are not designed to be removed from the radio clamps.

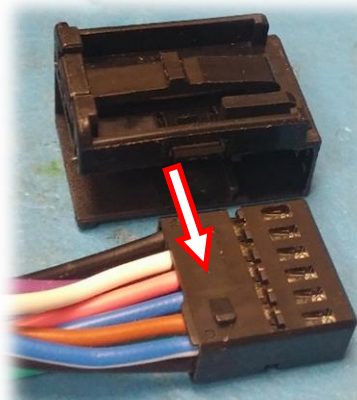
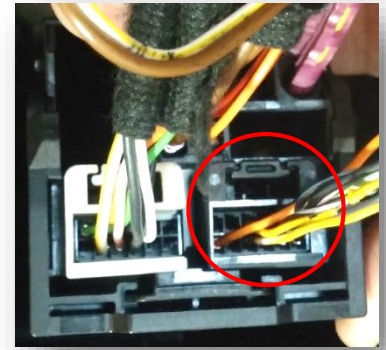


5. Remove the radio by pulling it towards you.



Installation

1. With the radio removed, disconnect all harnesses and set the radio aside.
2. In the main square radio plug, locate the 12-pin black plug and remove it (press clip on top and pull).
3. Separate the outer shell from this OEM connector and insert the provided 12-pin plug in its place (this connector only connects properly in one direction, but it is *possible* to install it upside-down).



OEM 12-pin
& outer shell

OEM 12-PIN Harness



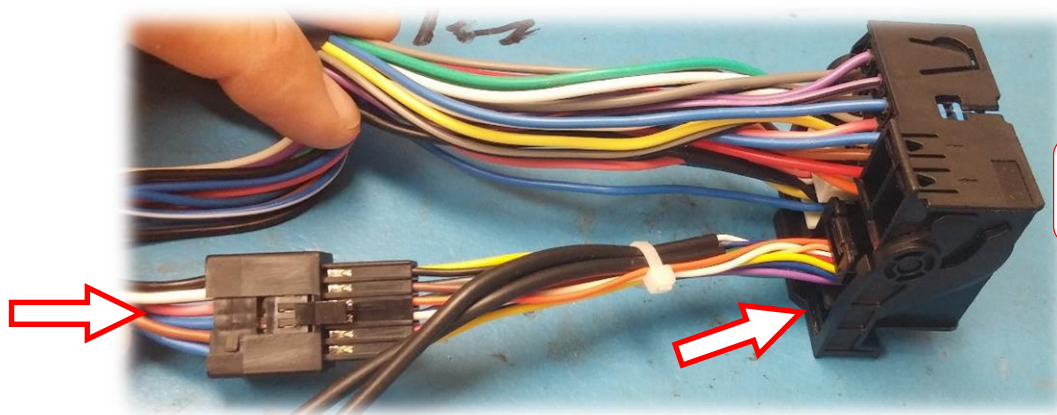
Provided 12-PIN plug & play



OEM 12-pin
outer shell

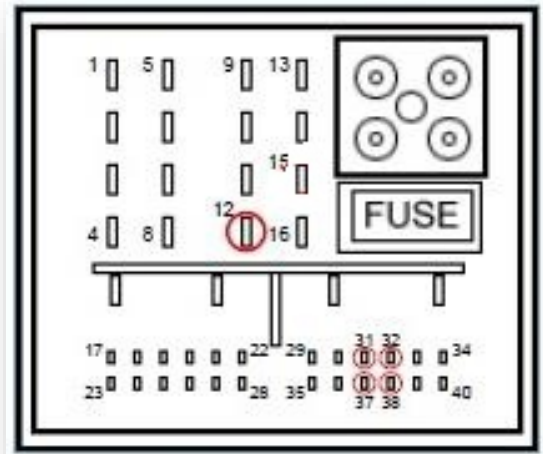
NOTE: if you insert this connector upside down, no picture at all will display on the monitor.

4. Connect the OEM 12-pin to the female end of the plug & play portion of the harness from step 3. Connect the new harness assembly back into the Main OEM Radio connector like shown.



Main OEM
Radio Connector

5. Locate the **black** and **red** wires labeled (GND) and (ACC) and solder these wires to the **ground wire (PIN 12)** and **Accessory 12v power wire (not found on radio)** on the same quad-lock connector (from step 4):



6. Locate the OEM, typically **Dark Blue**, 4-pin round connector (LVDS) that was removed from the radio in step 1 from the port on the radio labeled '**DISP**'. Connect this factory plug to the W205-N interface at the port labeled '**VIDEO OUT**'.



NOTE: If there is no dark blue LVDS video plug present, use the cable that makes the OEM screen disappear when unplugged (while radio is on).

7. Connect the white plug side of the provided **LVDS Video Cable** to the port on the W205-N interface labeled '**VIDEO-IN**'.



8. Connect the free end (aqua) of the provided **LVDS Video Cable** back to the factory radio at the '**DISP**' (dark blue) port.



9. Connect the small white 4-pin plug labeled 'CAN2' to the plug on the W205-N interface labeled 'CAN2' for proper operation.

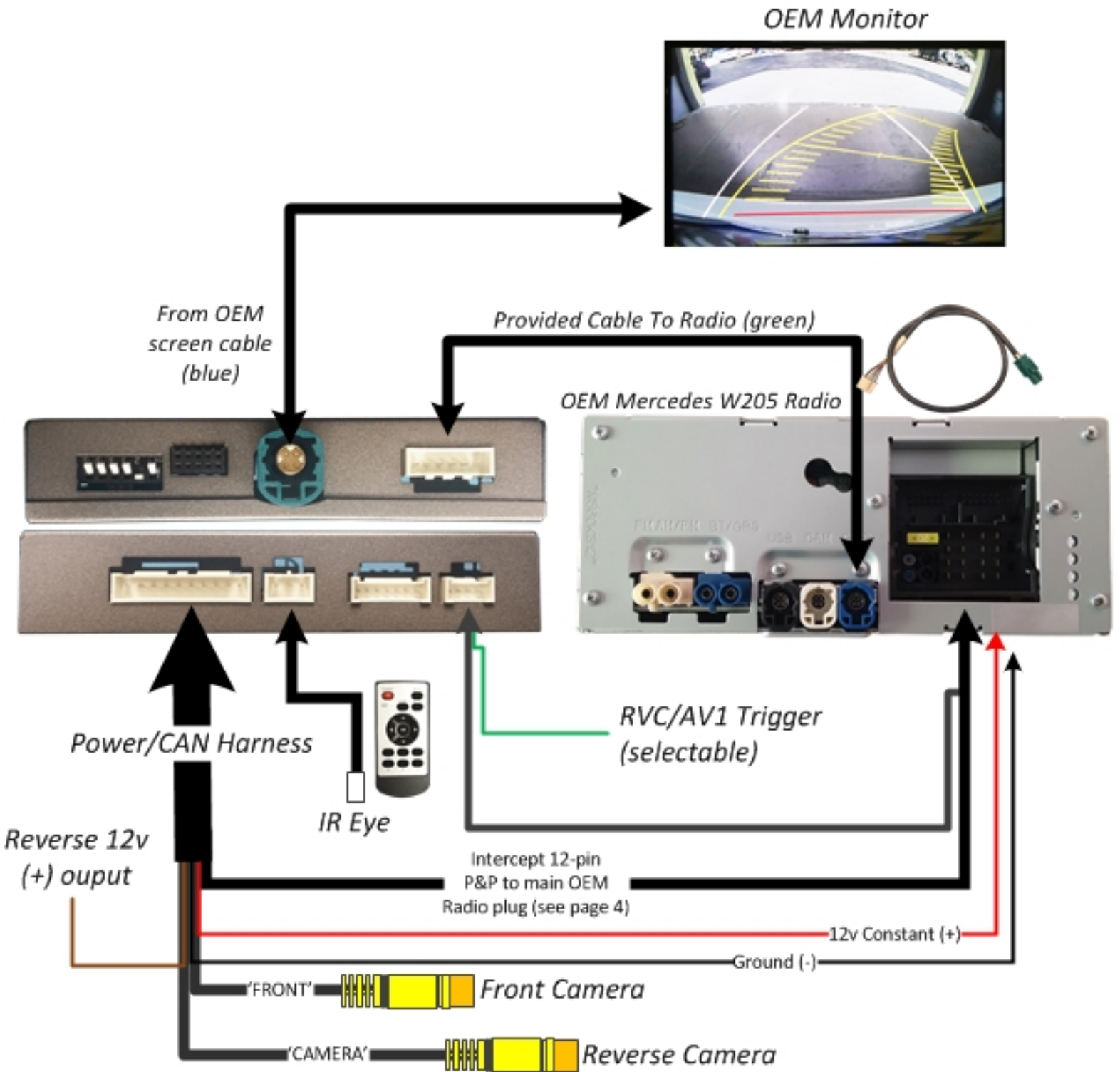


10. Power your reverse camera with an accessory 12v source, or use the **brown wire** for **reverse 12v through a relay**. Splice ground (-) to the black wire provided to the interface, or find another ground point/wire in the car.
11. Connect signal from the rear camera to the RCA labeled 'CAMERA' among the main Power/CAN harness.
12. Connect the white plug from the Power/CAN Harness to the port on the W205-N interface labeled 'POWER/CAN'.
13. **Optional:** If adding an additional video input (including front camera), use the provided RCA labeled 'FRONT' for signal input. This video source *must* be powered with an ACC source. *NOTE: If the user desires for automatic front camera-switching, this option must be set upon installation. See MENU Settings on page 8.*
14. Start the car and test for proper functionality before replacing any dash pieces.

NOTE: *If after verifying DIP Switches and you still don't get reverse activation (screen switching to cam-image while in reverse), re-test with ALL dash-board pieces connected properly.*

NOTE: *If the above was tried and you still are not getting anything on screen, providing the **green wire** among the **CAN 2 Harness** with a (+) reverse signal will switch the screen manually.*

W205-N RVC Install Diagram



Agreement: End user agrees to use this product in compliance with all State and Federal laws. NAV-TV Corp. would not be held liable for misuse of its product. If you do not agree, please discontinue use immediately and return product to place of purchase. This product is intended for off-road use and passenger entertainment only.

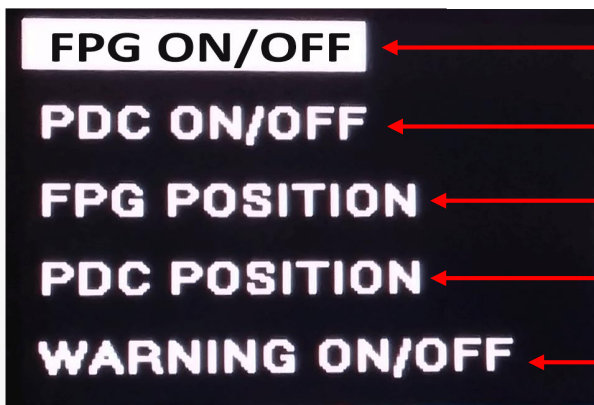
Menu Adjustments

Before you start:

- 1 The IR-Eye must be connected
- 2 Make sure the car's ignition is on and radio is on
- 3 You must be in **Reverse Camera** mode (place vehicle in reverse)
- 4 Repeatedly press the **MODE** button until guidelines appear on screen*
- 5 Now press the **OK** button **4 times**, then press **Power**
- 6 The **OSD Menu** will appear on screen (auto-time out in about 5 seconds if no action occurs).



NOTE- step 4 only required if OEM reverse camera exists



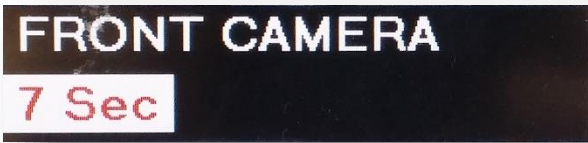
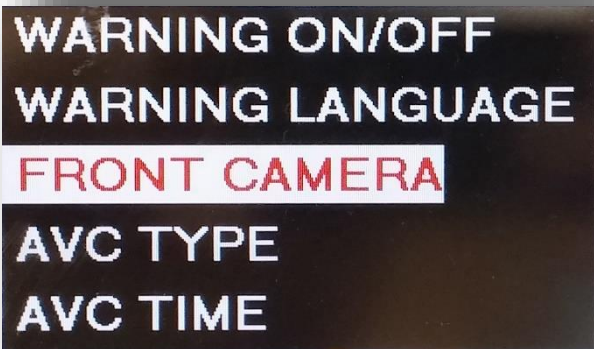
Functional Parking Guidelines ON/OFF

Not Used

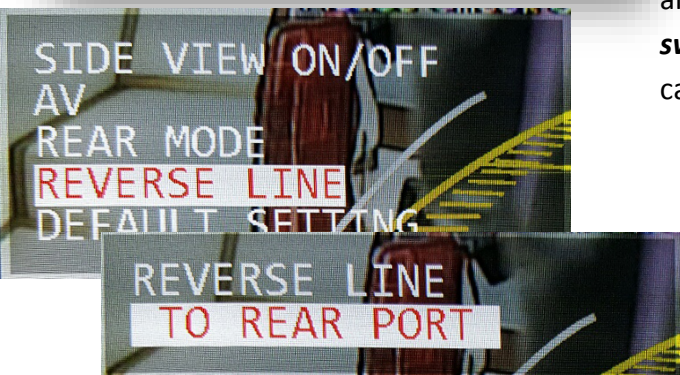
Adjust FPG Position

Not Used

'Safe to move?' ON/OFF



To set **Front Camera timer**, scroll down using the remote arrow keys when in the menu to **FRONT CAMERA**. Once in this setting, press OK and choose (up/down) between 5, 7, 9 or 11 seconds for **auto-front switching timeout** (once the vehicle leaves reverse gear, the front camera input will stay active for pre-defined amount of time).



To set custom **green wire trigger**, find 'REVERSE LINE' option and set to 'REAR PORT' or 'AV1' depending upon your preference. Every time the green wire receives 12v (+), the selected RCA port will display on screen.

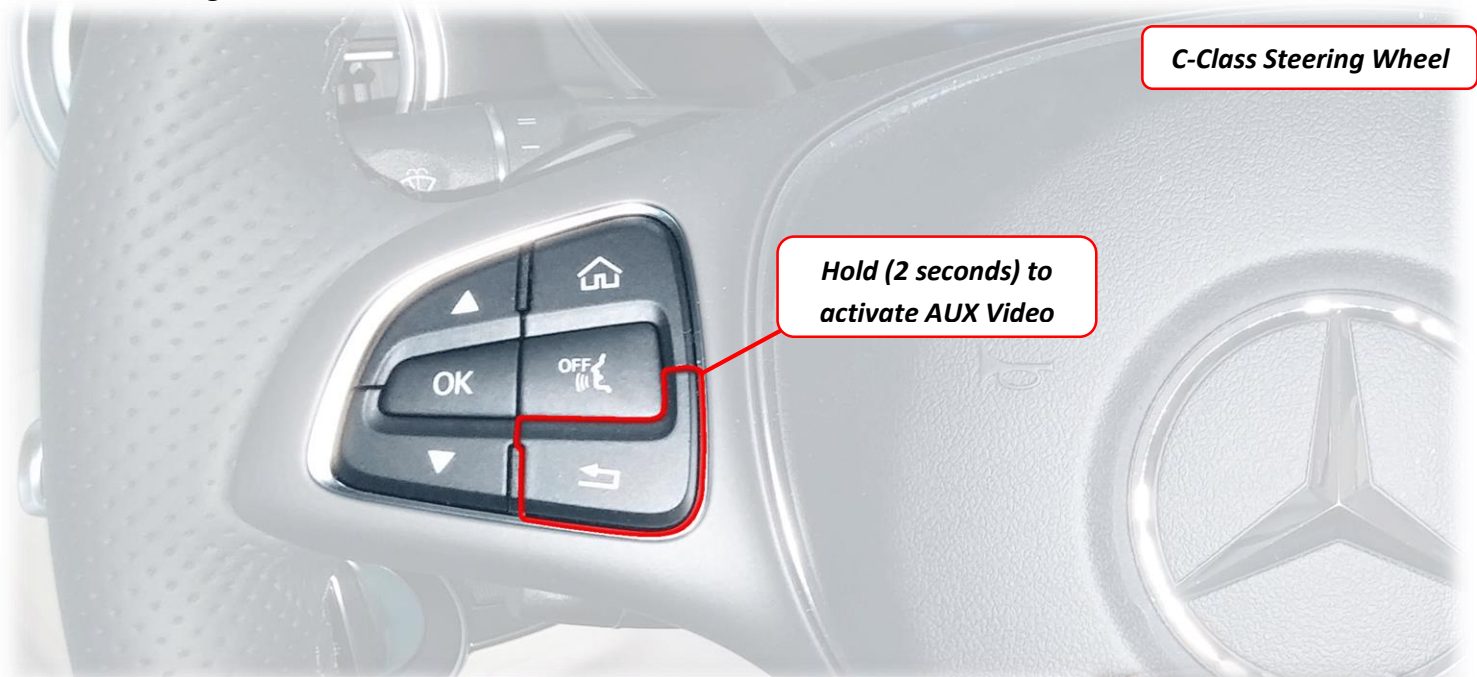
Agreement: End user agrees to use this product in compliance with all State and Federal laws. NAV-TV Corp. would not be held liable for misuse of its product. If you do not agree, please discontinue use immediately and return product to place of purchase. This product is intended for off-road use and passenger entertainment only.

W205-N RVC Operation

- **Once the W205-N RVC is connected properly, reverse activation is automatic. Placing the vehicle in reverse will display the connected camera's image automatically.**

Note: If display doesn't switch to reverse image when shifting into reverse, check dip switch settings on page 2.

- **For forcing the Front Camera at any time, press the Return button OR the NAVI button on the radio. On some vehicles, this is located on the steering wheel, others this is located near the COMAND knob. Otherwise, the front camera will display for as long as the setting was programmed (5,7,9 seconds, etc) once you leave Reverse gear.**



C-Class Steering Wheel



CLS Comand knob



C Class Radio



CLA COMAND knob

Agreement: End user agrees to use this product in compliance with all State and Federal laws. NAV-TV Corp. would not be held liable for misuse of its product. If you do not agree, please discontinue use immediately and return product to place of purchase. This product is intended for off-road use and passenger entertainment only.

Problem: When I connect power to the unit, I lose the factory screen image.

Solutions:

1. Check the round cable that's included with the kit that goes to the back of the radio and make sure the heatshrink label on the end says "**A Type.**"
 2. Make sure that the round cable from our module is connected to the radio and not to the back of the screen.
 3. Refer to page 4 and check the orientation of the 12-pin T-Harness at the radio's quad-lock connector. Although it's keyed to only plug in 1 way, it is possible to force it upside-down.
 4. Verify that this kit is compatible with your radio, check the label on the radio to make sure it is an NTG5 or higher or the NR-218 radio (there are also some other compatible radios, but we don't have a list of all compatible models. If it's an NTG4 radio, then it's definitely NOT compatible.
 5. If unplugging the power/CAN connector for the unit did not restore the factory image to the screen, please disconnect the vehicle battery for 1 minute to reset the system.
 6. Confirm the factory screen is displaying properly with Power/CAN unplugged but the LVDS cables connected. if not, suspect reversed LVDS connections, Bad LVDS cables or a defective unit.
-

Problem: I am adding an aftermarket Rear View Camera but the screen does not change to the camera when in reverse

Solutions:

1. Verify Power and Ground to the interface, Confirm inline fuse (in fuse holder) is intact and seated properly.
 2. Verify that the round cable from our module is in the correct jack in the back of the radio. (It should be labeled "DISP" or "DSP," but if none are labeled, it is the one that makes the screen go Black when you unplug it.
 3. Refer to page 4 and check the orientation of the 12-pin T-Harness at the radio's quad-lock connector. Although it's keyed to only plug in 1 way, it is possible to force it upside-down. Also verify that it is plugged into the factory Black connector and not the White one.
 4. Make sure Dip switches #3 and 4 are DOWN
 5. If the vehicle is equipped with a manual transmission, the green reverse trigger wire (to +12V) must be used.
 6. Try switching dip switch #5 down or dip switch #6 down (but not both Down or both Up) - power cycle and retest.
 7. Verify Doors and trunk lid are all closed.
 8. Make sure that the menu item "REAR MODE" is set to ON in the programming mode.
 9. Suspect defective unit.
-

Problem: I am adding an aftermarket Rear View Camera but the screen switches to black or black with parking lines when in reverse

Solutions:

1. If Parking lines are present, Video signal is not present at the CAM RCA input - verify video signal with a known working source. Possible causes would be bad camera, broken video cable from camera, no power / ground at the camera terminals.
 2. If parking lines are not present and the screen is fully black when in reverse, suspect an issue with the LVDS connections.
 3. Suspect defective wiring or defective unit.
-

Problem: When triggered, I can see a rolling or scrolling camera image.

Solutions:

1. Backup camera problem - double check Power and Ground to the camera, replace camera.
-

Problem: I can see a backup camera image but no Parking lines are visible

Solutions:

1. Refer to Page 8, make sure "FPG" is set to ON.
-

Problem: My vehicle has a factory rear view camera, I am adding a front camera or an AUX video source and I lost my Factory RVC when in reverse

Solutions:

1. Set dip switches #3 or 4 or both 3 & 4 UP.