

# NAV-TV

INTERFACING THE FUTURE

3950 NW 120<sup>th</sup> Ave, Coral Springs, FL 33065 TEL 561-955-9770 FAX 561-955-9760

## MOST-H.U.R. MB V2

Head Unit Replacement interface for select Mercedes

*NTV-KIT736*



**MOST**<sup>®</sup>

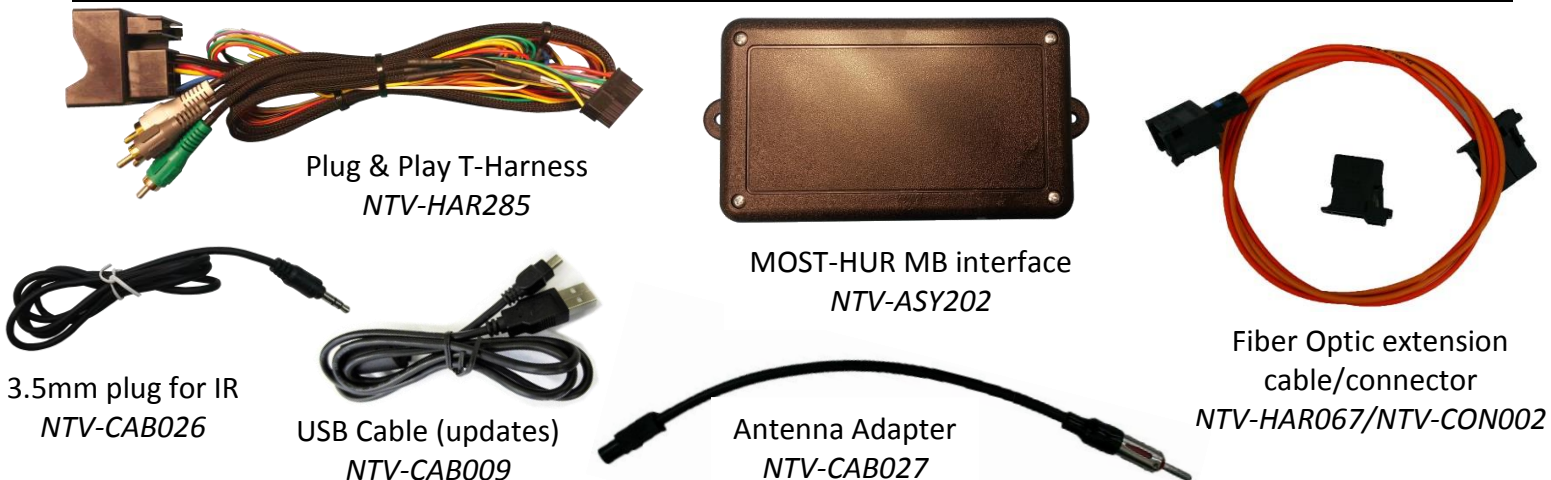


BHM  
10/18/18  
NTV-DOC210

Overview

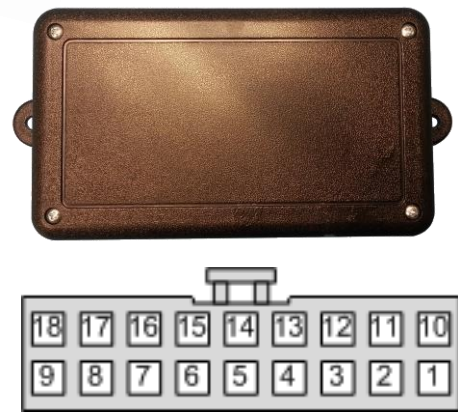
The MOST-HUR MB V2 is a radio replacement interface for select Mercedes Benz vehicles equipped with an external M.O.S.T. fiber optic amplifier. The module allows the factory amplifier, speakers and sound quality to be retained when adding a modern aftermarket radio. Other components in the factory system, such as a CD changer, satellite radio, telephone module, DVD player, or any other factory component in the M.O.S.T loop will not need to be removed, but will not function after the installation.

Kit Content



MOST HUR-MB V2 Pinout

Pin #	Description	Color	Radio Connections:
1	Constant 12v (+)	Yellow	Radio, Constant Power
2	Left Front Audio IN	White RCA	Radio, Left Front RCA OUT
3	Rear Common Shield	Green/Purple RCA	Radio, Rear RCA Common
4	Left Rear Audio IN	Green RCA	Radio, Left Rear OUT
5	Remote IN	Yellow/Black	Radio, Remote OUT
6	--NOT USED--	Yellow/Blue	--
7	Reverse Signal OUT	Purple/White	Radio, Reverse IN
8	Illumination OUT	Orange	Radio, Illumination Control
9	CAN HI	Brown/Red	--
10	Ground	Black	Radio, Black (Ground)
11	Right Front Audio IN	Gray RCA	Radio, Right Front RCA
12	Front Common Shield	White/Gray RCA	Radio, Front RCA Common
13	Right Rear Audio IN	Purple RCA	Radio, Right Rear OUT
14	IR OUT	White	Radio, IR Control
15	Parking Brake OUT	Green	Radio, Parking Brake IN
16	--NOT USED--	Green/White	--
17	12 ACC OUT (1 amp)	Red	Radio, ACC Power
18	CAN LO	Brown	--



Wire side view

*Wires highlighted green will be connected to the vehicle via the Plug & Play Harness.*

Agreement: End user agrees to use this product in compliance with all State and Federal laws. NAV-TV Corp. would not be held liable for misuse of its product. If you do not agree, please discontinue use immediately and return product to place of purchase. This product is intended for off-road use and passenger entertainment only.

## HUR-MB Installation

- 1. Base-line the factory radio:**
  - a. Source the radio to FM radio.
  - b. Adjust the volume to a **comfortable** listening setting
  - c. Be certain the **MUTE** function is not enabled
  - d. Center the balance and fade, center the bass and treble
  - e. Be certain there are no other problems with the factory stereo system before installing this unit.
- 2. Remove the factory radio *and any other aftermarket MOST components (if existing) from vehicle – even if they are NAV-TV MOST components.***
- 3. Connect the provided **Plug & Play Harness** to the main factory connector previously removed from the OEM radio.**
- 4. Remove the fiber optic plug from the OEM Harness.**
  - a. Connect the provided **fiber connector** to the OEM fiber plug
  - b. Connect the new fiber assembly to the MOST HUR-MB interface at the fiber port.
- 5. Connect the RCAs among the **Plug & Play Harness** to the low-level pre-outs of the aftermarket radio. *NOTE: factory subwoofer (if equipped) is not adjustable through the amplifier, therefore will not be adjustable with the aftermarket HU.***
- 6. Make all remaining radio connections:**
  - a. *Ground (-)* is provided from the HUR **Black** wire (PIN 10)
  - b. *Constant Power (+)* is provided from the HUR **Yellow** wire (PIN 1)
  - c. *ACC 12v (+) power* is provided from the HUR module **RED** wire (PIN 17). **Connect the vehicle's Power Antenna wire (blue from HUR) to this ACC as well (often times, some radios will not supply sufficient current to the vehicle power antenna.**
  - d. *Reverse signal* is provided from the HUR module **Purple/White** wire (PIN 7)
  - e. *Remote from HUR (yellow/black) must connect to the remote OUT from the radio (typically blue/white)*
  - f. *IR signal* is provided from the HUR module **White** wire (PIN 14). *NOTE: If installing Kenwood radio, connect white wire directly to remote-in wire from head unit. All other radios, connect white wire to the red wire of the provided IR plug 3.5mm adapter cable and connect to remote in port on HU.*
  - g. *E-brake* is provided from the HURv2 unit's **Green** wire (PIN 15). Connecting this to the Parking brake wire of the radio will *bypass the video lock-out restriction on every key cycle\**.
  - h. *Connect the RCAs from the HUR to the radio's low-level outputs. The high-level speaker leads are not used for this install.*
- 7. Connect the 18-pin plug from the **Plug & Play Harness** to the MOST HUR-MB interface at the power port and proceed to **MOST HUR-MB V2 Menu Setup**.**



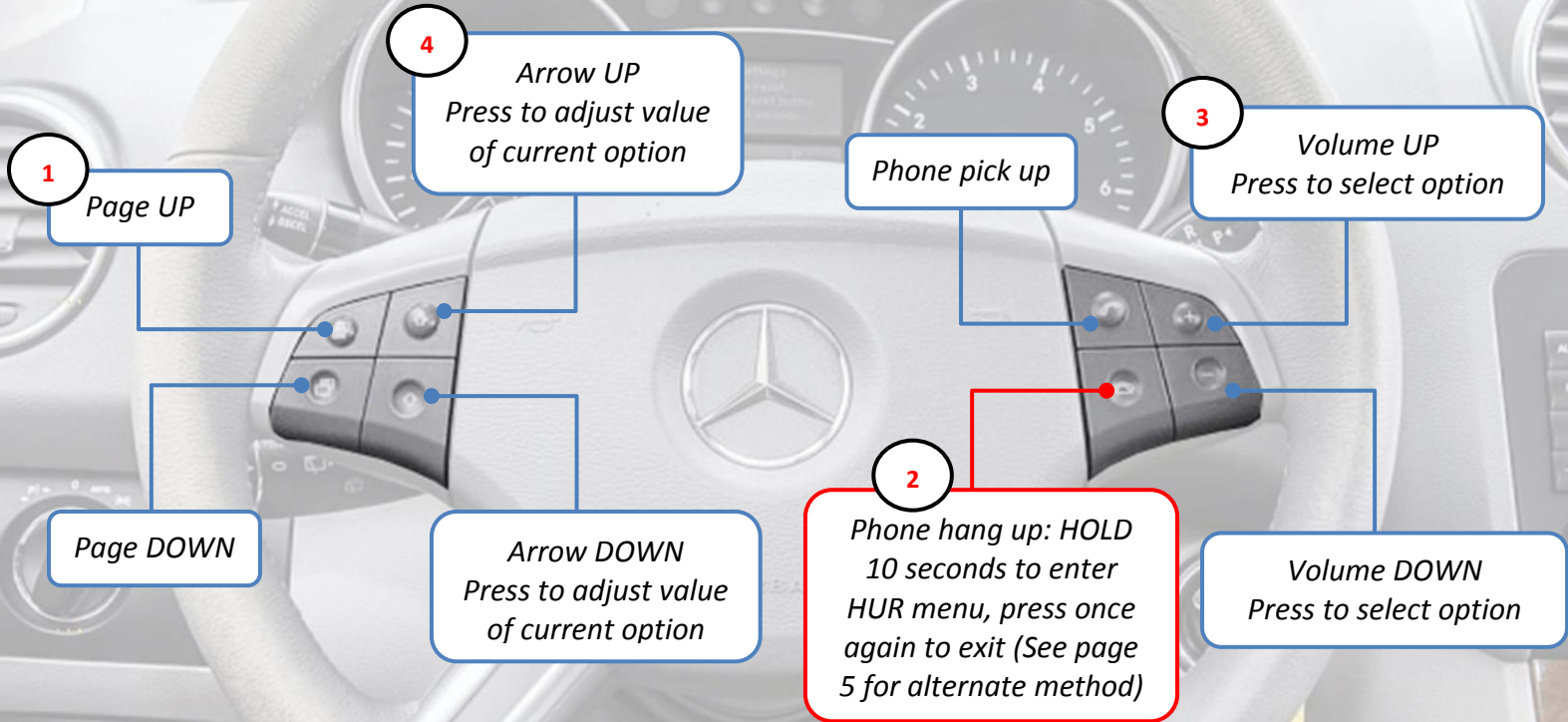
*\*For off-road use and passenger entertainment only.*

Agreement: End user agrees to use this product in compliance with all State and Federal laws. NAV-TV Corp. would not be held liable for misuse of its product. If you do not agree, please discontinue use immediately and return product to place of purchase. This product is intended for off-road use and passenger entertainment only.

**MOST HUR-MB V2 Menu Setup**

- Once all connections are made, verify sound is heard through the system with the key on. Verify balance and FM radio signal (via the aftermarket HU).
- The following MOST-HUR/OEM Amplifier adjustments can be made with the OEM steering wheel controls, and feedback is shown through the cluster LCD screen during the process.

*To begin, the cluster must be resting in 'AUDIO' display mode (use Page UP or DOWN until 'Audio' appears)*



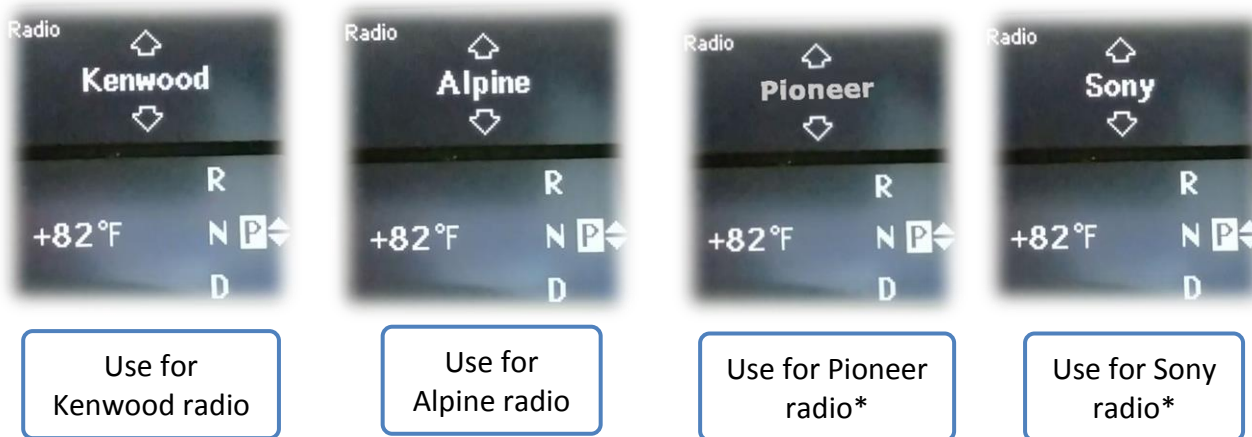
- Input GAIN**  
0-100%  
Use Arrows to adjust
- FADE**  
-5 - +5 Rear/Front  
Use Arrows to adjust
- BALANCE**  
-5 - +5 Left/Right  
Use Arrows to adjust
- BASS**  
-5 - +5 Left/Right  
Use Arrows to adjust
- TREBLE**  
-5 - +5 Left/Right  
Use Arrows to adjust

**NOTE: FADE settings are only active through the cluster – they will NOT function through the aftermarket radio.**

Agreement: End user agrees to use this product in compliance with all State and Federal laws. NAV-TV Corp. would not be held liable for misuse of its product. If you do not agree, please discontinue use immediately and return product to place of purchase. This product is intended for off-road use and passenger entertainment only.

MOST HUR-MB V2 Steering wheel type / LOGIC 7 setup

- Before steering-wheel controls will operate properly, you must select the proper protocol in the HUR Cluster menu (see page 4). Each type is detailed below:



*\*Pioneer & Sony only available on Rev 4+ hardware.*

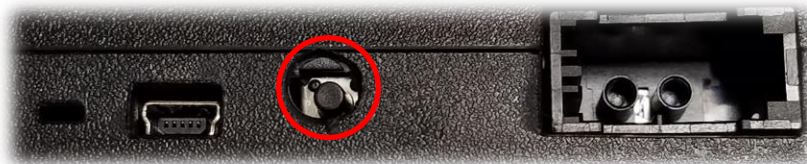


Select whether or not to use OEM LOGIC 7 processing

*When finished, press **Phone Hang Up**, or **cycle key**, or wait for **15-second time out**.*

Entering HUR Cluster menu without steering wheel (optional)

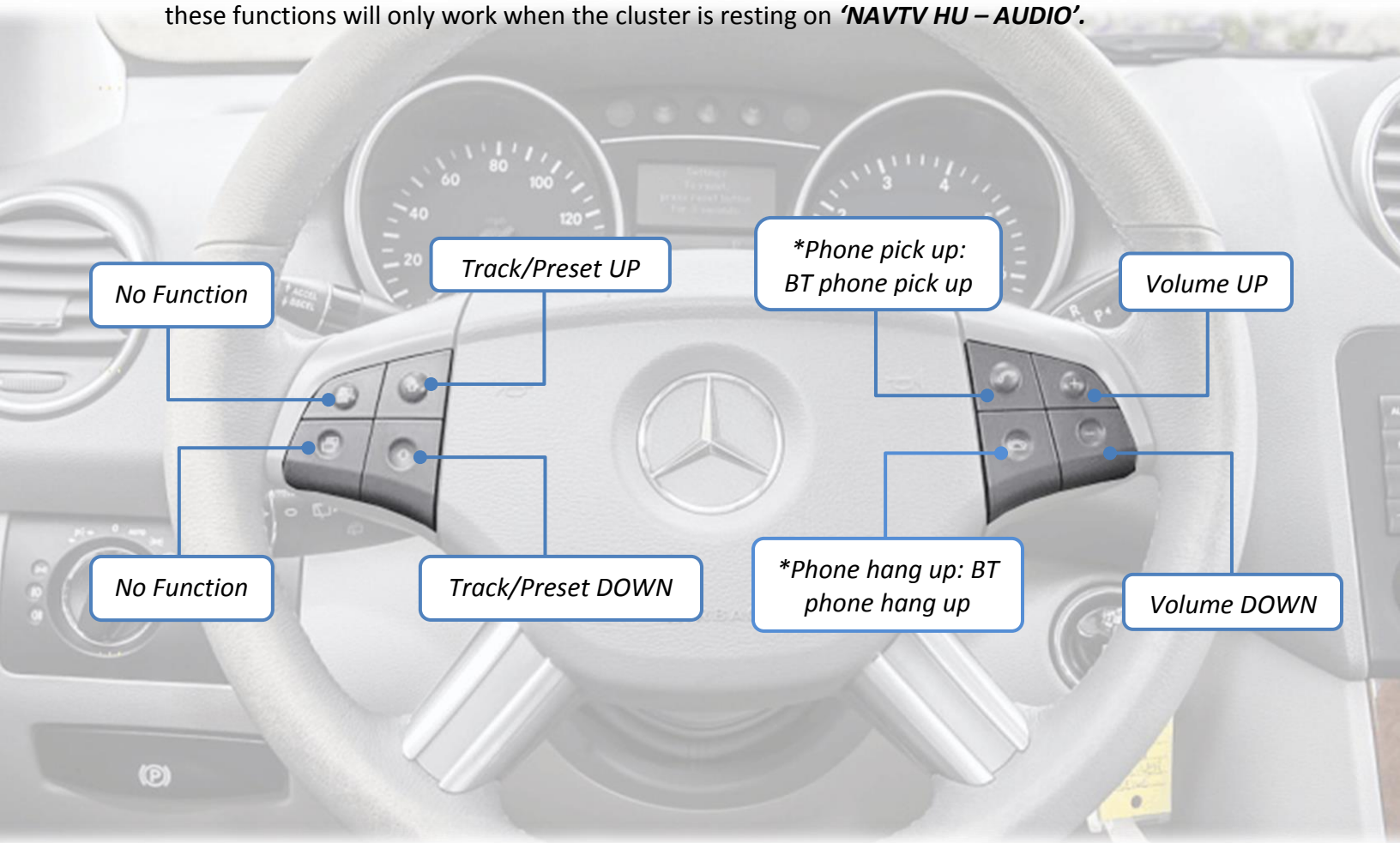
If this Mercedes has *Tel-Aid* or *MBRACE*, entering the HUR Cluster menu may not be accessible with the **Hang Up** button. In this case, **press and hold** the push button on the side of the module for **10 seconds** to enter the menu, adjust settings normally, then press the button once more to **exit**.



***NOTE:** when mounting the HURv2, be sure not to allow anything to press against this button.*

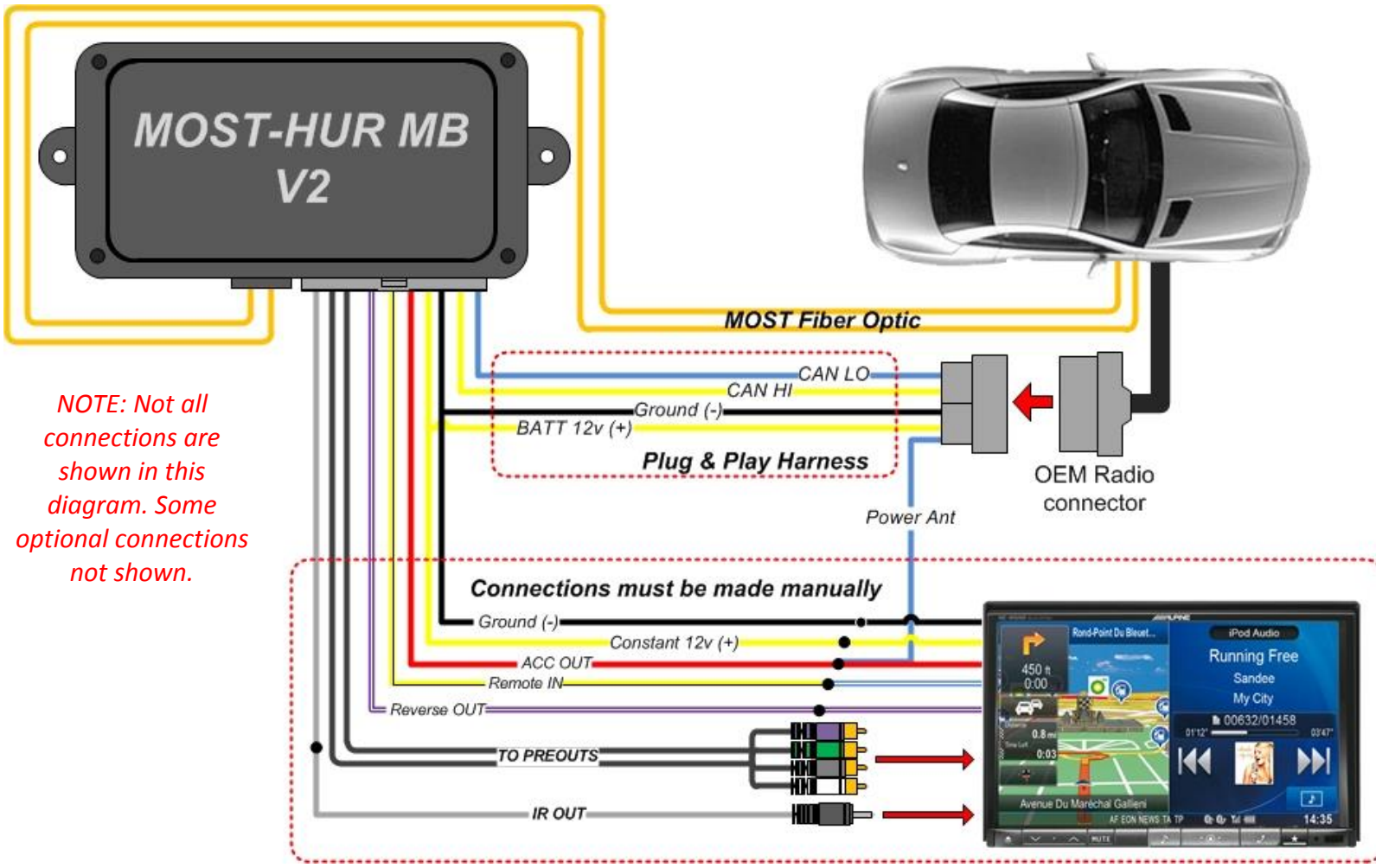
## Steering Wheel (radio) Control

- This section shows the steering wheel controls **when not in NAV-TV settings mode**. Note that some of these functions will only work when the cluster is resting on **'NAVTV HU – AUDIO'**.



- Pioneer and Sony radio steering wheel control support coming soon
- *\*Not supported in all vehicles due to various vehicle-equipped or non-equipped components*

MOST HUR-MB V2 Diagram



*NOTE: Not all connections are shown in this diagram. Some optional connections not shown.*

# NAV-TV

INTERFACING THE FUTURE



Agreement: End user agrees to use this product in compliance with all State and Federal laws. NAV-TV Corp. would not be held liable for misuse of its product. If you do not agree, please discontinue use immediately and return product to place of purchase. This product is intended for off-road use and passenger entertainment only.