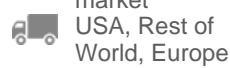
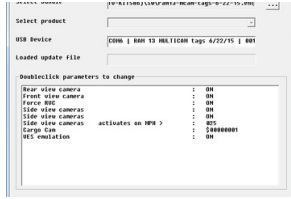


## RAM MULTI-CAM (obsolete)

Price: **\$549.99**



**This product is obsolete. For new installations, use [UCTv2 MULTI-CAM NTV-KIT764](#).**

The RAM MULTI-CAM interfaces up to 5 cameras & 1 Auxiliary A/V source to the OEM RA4/RA3 8.4" uConnect media screen in 2013+ RAM vehicles. All connected cameras are displayed through factory controls. Turn signal camera activation is speed adjustable via programming from the factory radio controls & LCD cluster, or optional USB updater via a Windows PC. Additionally, for 14 & 15 RAMs, both OEM tailgate and Cargo Camera may be shown on the main screen if equipped.

**Note:** This kit is compatible *with limited functionality* in RAMs equipped with the 5" RA2 radio. *All forced functions via OEM dash buttons are not supported (vehicle limitation) with 5" RA2.*

**Connection Type:** CAN data filtering

**Plug & Play:** No

**Activation:** Automatic & OEM buttons (force cam(s): for color cluster-equipped trucks only)

**Video Inputs:** 6 composite (5 cameras + 1 AUX video)

**Video Outputs:** None

**Audio Inputs:** 1 pair analog (with AVSW only)

**Audio Outputs:** None

### Car Radio Versions

5" uConnect RA2 (1 piece)

RAM 8.4" uConnect

### RAM MULTI-CAM (obsolete) Compatibility Chart

Model	Year Range	Version	Radio	Notes
Dodge/Ram	2013-2018	USA, Rest of World, Europe	5" uConnect RA2 (1 piece), RAM 8.4" uConnect	
RAM/1500-2500-3500	2013-2016	USA, Rest of World, Europe	5" uConnect RA2 (1 piece), RAM 8.4" uConnect	

